

LRW165-...H

User manual and warranty card

Thank you for choosing our product! Before using your new led lighting system, please carefully read it's instructions for safe and correct usage!



Model	Voltage	Power	Suitable for aquarium	Lamp dimensions	Light power
LRW165-400H	24 V	60 W	40-50 cm	40x16,5x2 cm	6000 lumen
LRW165-600H	24 V	90 W	60-70 cm	60x16,5x2 cm	9000 lumen
LRW165-800H	24 V	120 W	80-90 cm	80x16,5x2 cm	12.000 lumen
LRW165-1000H	24 V	150 W	100-110 cm	100x16,5x2 cm	15.000 lumen
LRW165-1200H	24 V	180 W	120-130 cm	120x16,5x2 cm	18.000 lumen
LRW165-1500H	24 V	240 W	150-160 cm	150x16,5x2 cm	24.000 lumen



Made in Serbia

Table of content

Safety instructions and usage of led lighting system	2
Recycling	4
Areas of application	4
Special characteristics of led lighting system	4
Installation steps	5
Warranty card	9
Warranty conditions	10
Contact	10

Safety instructions and usage of led lighting system

Please adhere to the following:

- The led lighting system is only installed when it's not connected to the power source (the cable is not in power connector)!
 - The led lighting system does not contain serviceable parts. Do not disassemble the led lighting system by yourself! Repairs of device may only be performed by the manufacturer, otherwise the warranty will not be valid.
 - Do not look directly into the emitting light of led lighting system!
 - Use the power supply only at the specified mains voltage (110 or 230V)!
 - The led lighting system is intended for indoor use only. It must not be used under water and in places that are not protected from direct spraying of water and moisture!
 - Do not use it on terrariums because the emitting light of led lighting system is not suitable for reptiles or amphibians!
 - Do not use led lighting system near flammable materials!
 - Do not remove the lighting cover or any part of it.
 - If the led lighting system or any part of it is damaged, unplug it and stop using it immediately. Contact us as soon as possible!
 - Handle this product with care and use it only according to the enclosed instructions! Protect it from bumps, shakes and falls, otherwise physical damage or malfunction may occur!
 - The led lighting system can only be cleaned when it's not connected to the power source (the cable is not in power connector)! Do not use aggressive cleaning chemicals! Remove dust with a slightly damp cloth or alcohol-based products.
 - When performing regular aquarium maintenance, it is recommended to move or push the led lighting system in a place where the led lighting system is stable, thus avoiding the possibility of the led lighting system falling into the aquarium or falling to the floor!
- If the led lighting system is hanging type, check the parts or components used for hanging led lighting systems, to make sure that the led lighting system is properly secured against unwanted falls.
- Due to the heat energy that is released during the operation of the led lighting system, do not use the led lighting system in covered aquariums, ie. their hoods, for safety and functional reasons (overheating and failure)! Cooling of led lighting system must be provided continuously. Large fumes can cause moisture to condense inside the led lighting system, causing damage to electrical components and the risk of a short circuit failure.
 - Do not cover the led lighting system and do not use it as a shelf for storing fish food or chemicals for the aquarium. Objects placed on the led lighting system can reduce the area for releasing of heat energy into the space (cooling), and can cause overheating and failure.
 - Do not store aquarium tools, chemicals, fish food, etc. on the led lighting system. Plants fertilizers

and other liquids placed on the lighting can leak, which can cause damage to the anodized surface, and thus degrade the level of heat release and the aesthetics of the led lighting system it'self. Due to the heat, plant fertilizers and fish food deteriorating faster.

- Body of led lighting system is heated during use. The operating temperature must not exceed +70 °C.
- Do not use the led lighting system if the light source is defective or damaged
- If any part of the led lighting system comes into contact with water, immediately disconnect it from the power supply and remove the water, only after you have made sure that all the water / moisture has been removed you can connect the led lighting system to the power supply again!
- Make sure the led lighting system works as intended. In case of an error please do not experiment, do not hesitate to contact us.
- Make sure the power sources and connections are properly connected and installed. The installation of connections and power sources should be planned so that they are not accessible to children and pets.
- Do not leave a child unattended beside the led lighting system!
- In moment of purchasing of our led lighting system, please check the condition of the led lighting system. If you find that there is any damage to the led lighting system it'self, please notify the store where you purchased the led lighting system immediately. Do not use faulty led lighting systems.

The use of led lighting system is not allowed in extreme conditions.

Under such conditions are considered:

- water source directed directly at the lighting (dripping or spraying),
- too high humidity (> 95%),
- too high ambient temperature (> + 40 ° C),
- the presence of large amounts of dust and flammable gases and vapors and solvents

Such or similar circumstances mentioned above are not allowed as they may result in malfunction of the lighting it'self.

In addition, there is a risk of short circuit failure, electric shock, fire, etc.

We do not accept any responsibility for material or personal injuries due to improper handling or non-compliance with safety regulations. Modifications and / or any repairs to the device by the end user or third parties are strictly prohibited for safety reasons and for licensing (CE). If you have any doubts about installation, operation, safety, etc. led lighting system it'self, we kindly ask you to contact us, we will always be happy to help you.

Statement of responsibility: The manufacturer reserves the right to change this document. The manufacturer accepts no liability in the event of incorrect use of the device!

Recycling

This product must be disposed of in accordance with European regulations in order to reduce its impact on the environment. Contact your local or regional waste management representative for more information on how to dispose of them. Electronic products that are not included in the selective treatment of waste can be dangerous to the environment and human health.



Areas of application

Our led lighting system is designed exclusively for lighting plant aquariums. Under proper lighting and with proper nutrition, plants thrive beautifully and properly. The intensive reproduction of light produced by our led lighting system, the warm and vivid colors it gives, affect both the human eye and illuminated plants, because the emitting light is optimized to fulfill both of these tasks.

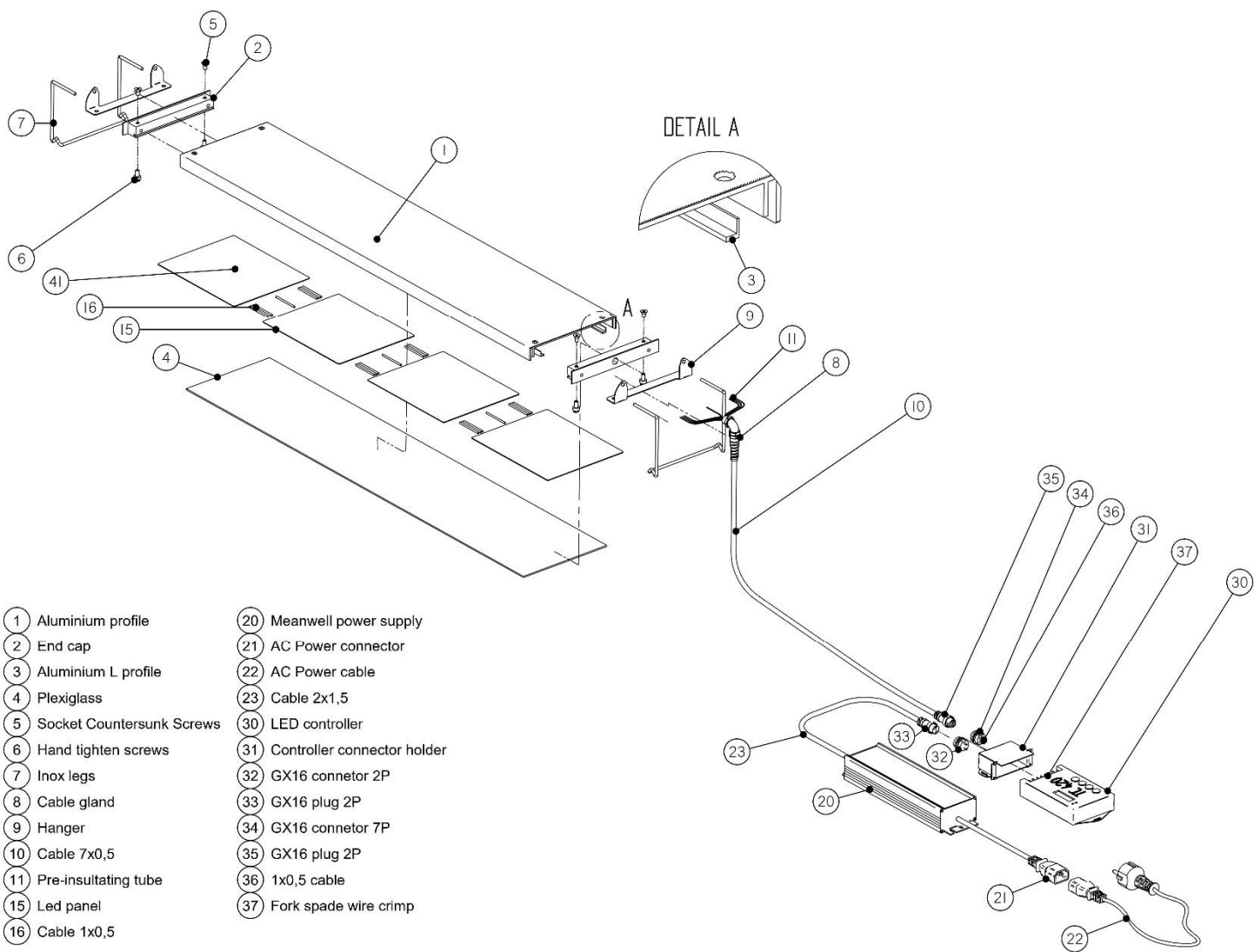
Specially designed for planted aquariums, our led lighting systems are designed to match the length and illumination of the existing standard aquarium sizes. They also meet the requirements for proper illumination for both, low-tech and high-tech aquariums. The above means that each liter of a standard aquarium will have the appropriate amount of light, taking into account the previously set requirements of the aquarium.

Example: An aquarium with dimensions 80 cm x 35 cm x 40 cm has a volume of 112 liters, the led lighting system LRW165-800H gives 12,000 lumens, so growing even demanding plant species is no challenge anymore.

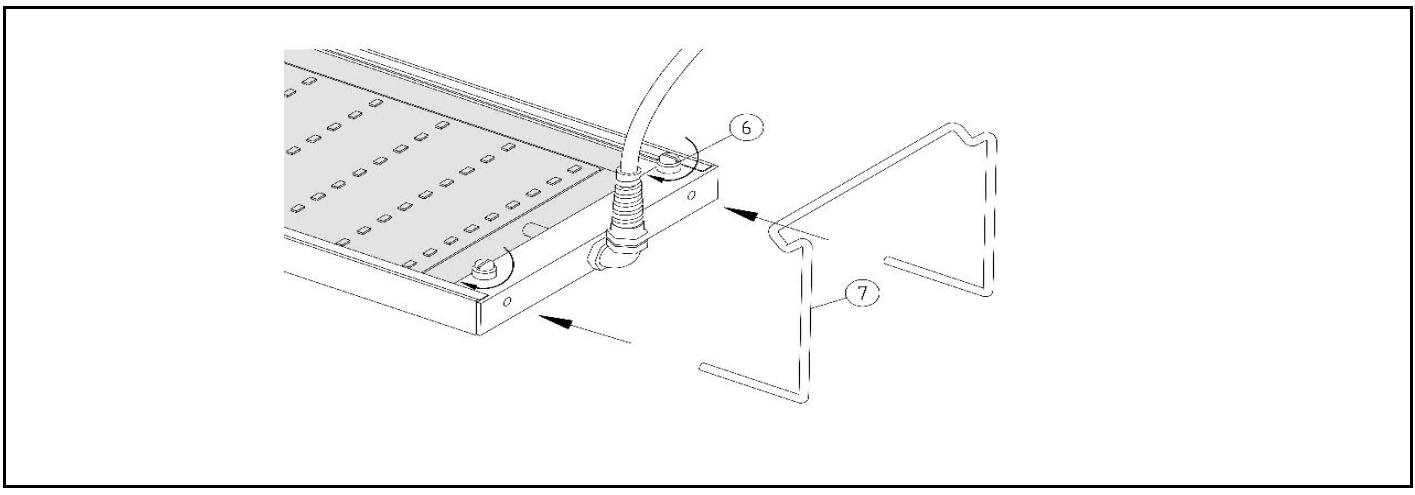
Special characteristics of led lighting system

- Durable anodized aluminum design
- Best passive cooling thanks to the ribbed thick aluminum profile
- Long service life of LED chips
- Protection against splashes of water and moisture over the entire surface that protects diodes and electronic circuit's
- Stainless steel legs, for safe placement on the aquarium
- Innovative and elegant design
- Lighting is also available in a dimmable version (optional)
- Kit does not include a timer (timer is not required with optional built-in LED controller)

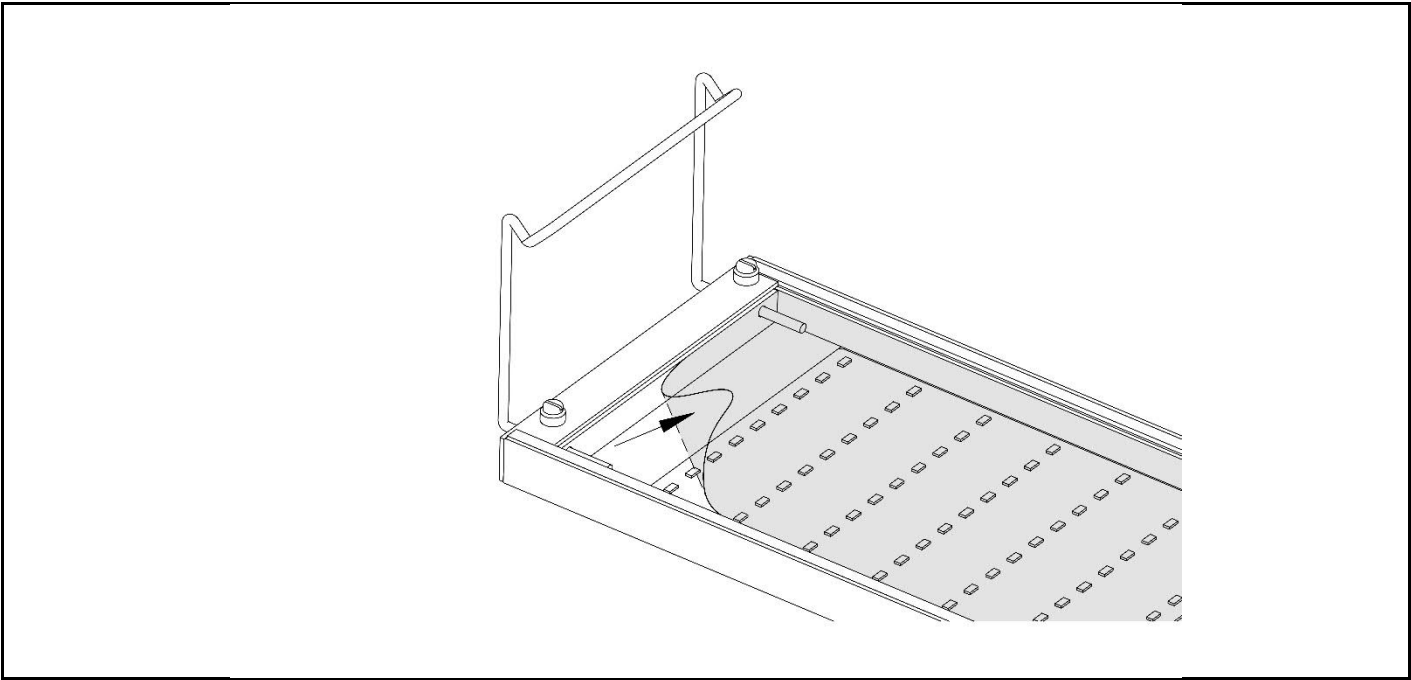
Installation steps



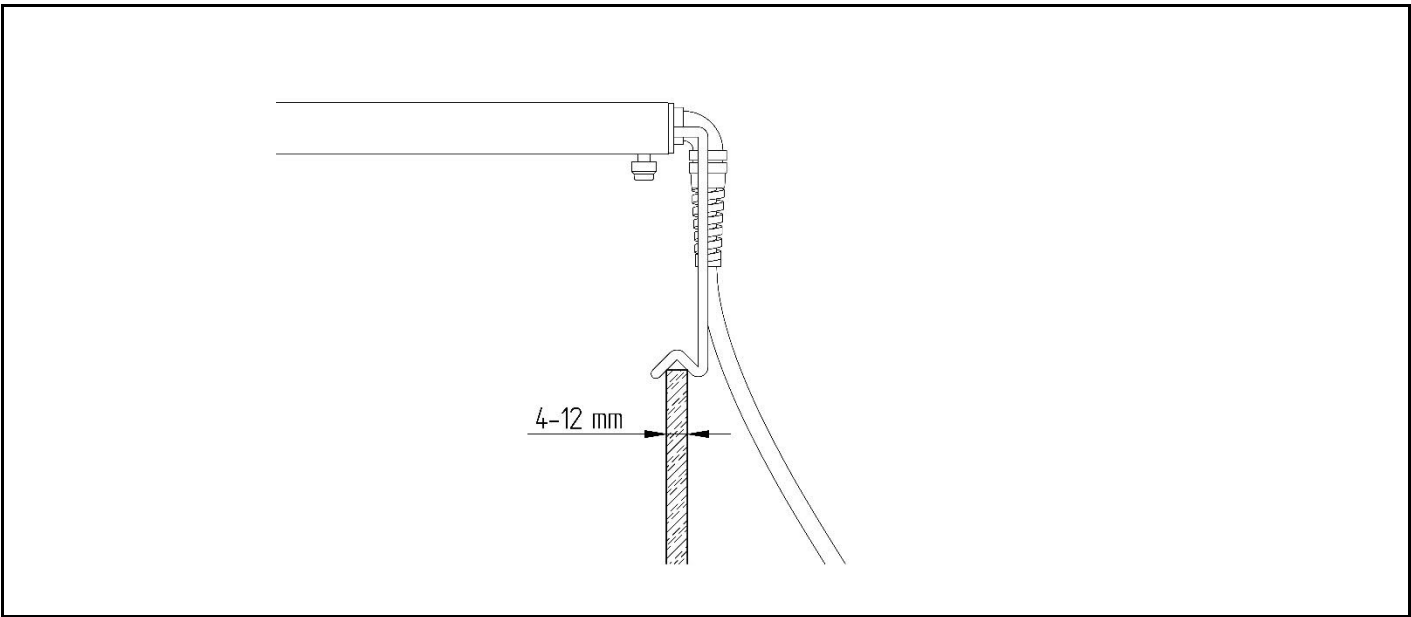
- **Unpack the led lighting system, check that it is not damaged or that all belonging accesories are complete**
(contact your dealer or manufacturer for any defects)
- **Place the two stainless steel legs (7) in the holes on the side of the bracket and tighten them with the hand screws (6) below.**



- Remove the protective film from the plexiglass!



- Place the led lighting system with pre-assembled legs on the edges of the aquarium and adjust the legs so that they fit perfectly on both sides of the aquarium.

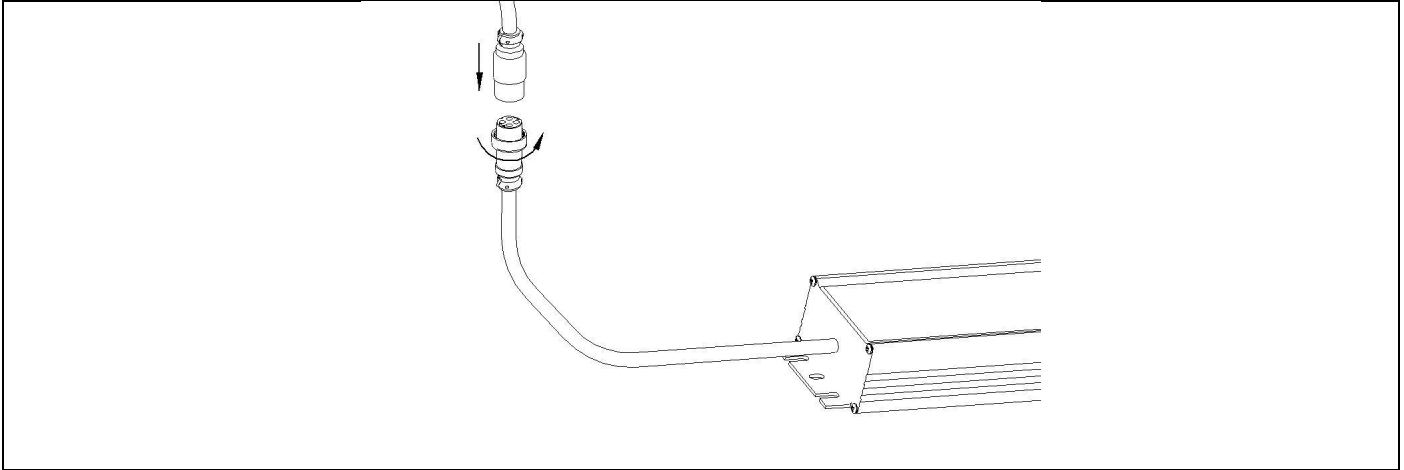


- Place power and mains connections in the aquarium cabinet, out of the reach of children. The power supply and connectors must not be placed in tight spaces or covered with anything to ensure proper ventilation.



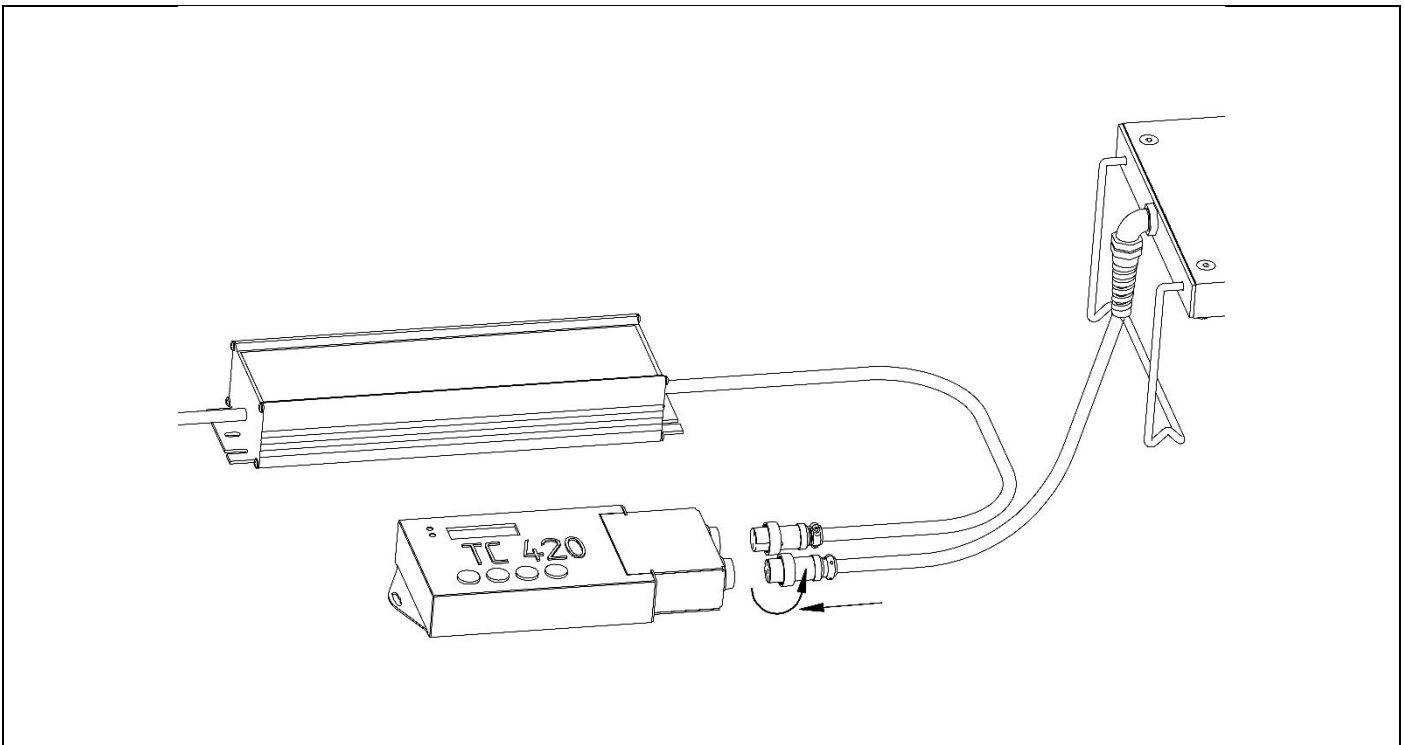
- Connect the led lighting system to the power supply. Check that the sockets are installed correctly and that the safety lock nut is in correct position. It is important that the connection are properly assembled, because an incorrect connection can lead to melting of the socket, damage to the cable, power supply or the LED panel it'self, and in extreme cases it can also cause ignition. Sockets that are damaged, deformed or incorrectly connected report to the dealer or manufacturer immediately. Do not use lighting with damaged connectors.

There is no risk of electric shock, because direct current (DC) flows through the connector, but a faulty connector can cause overheating and also skin burns.

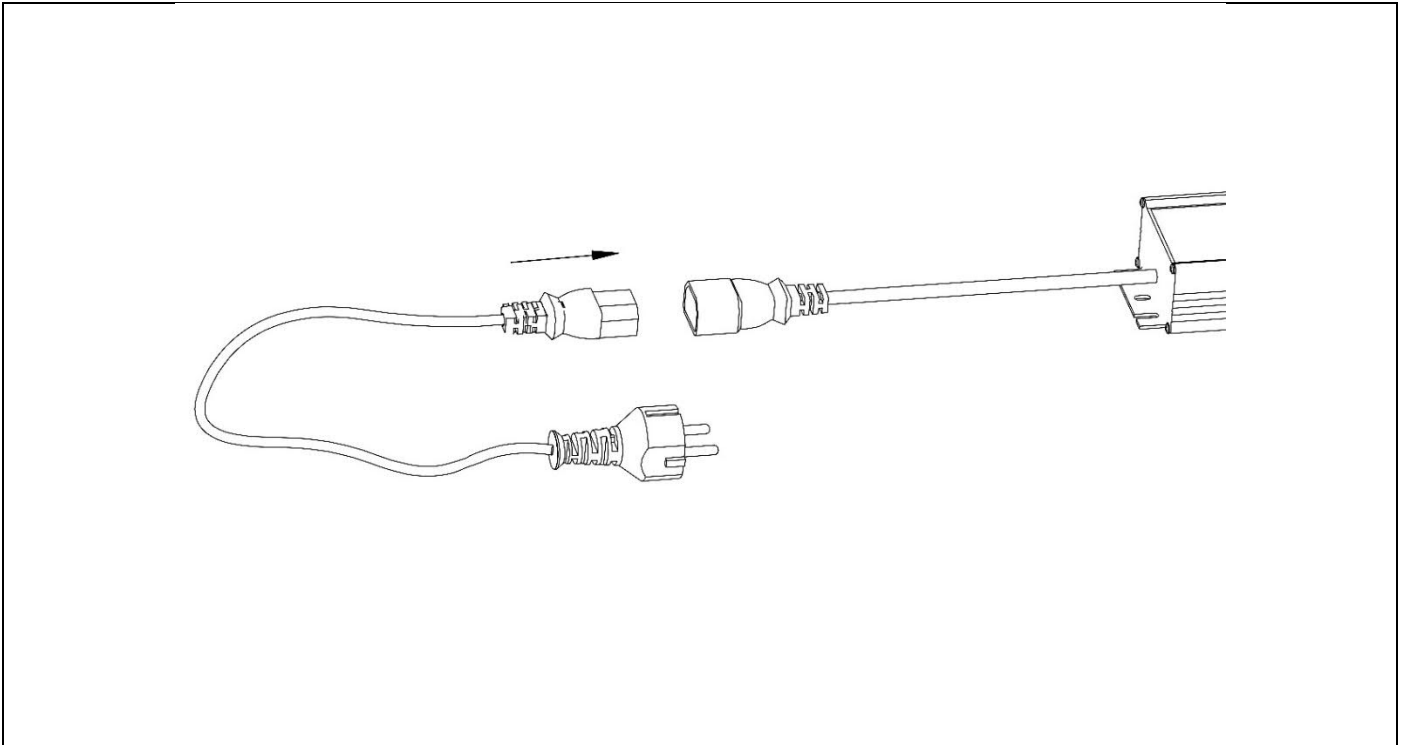


- If the led lighting system is equipped with an external controller, the power and lighting connectors are connected in the controller. From the power supply, the connector is connected to the "INPUT" socket on the controller, and the lighting connector is connected to the "OUTPUT" socket of the controller. The connectors cannot be mixed because they are different shapes and designs and have special grooves for positioning. Check that the sockets are correctly installed and that the safety nut is in place.

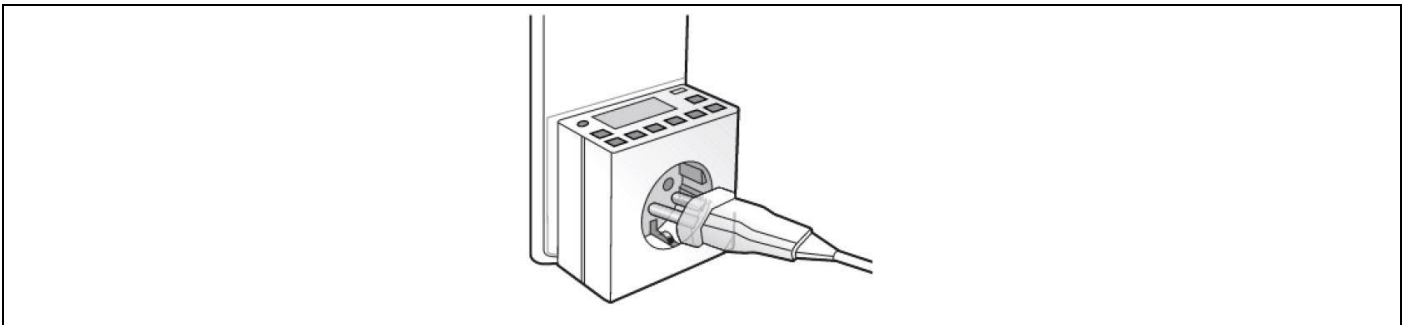
There is no need for an additional timer in addition to the controller, as the controller can control the brightness as well as the time intervals expressed in minutes. Further descriptions, guides and related programs can be accessed and downloaded from the official Lumen-aquatech website.



- Connect the power cord to the AC power connector and make sure it is connected properly.



- Plug the timer into a wall outlet and set it to "OFF", then plug the led lighting system plug into the timer. If the led lighting system has a built-in controller, no special timer is required for led lighting system.



- After connecting all connections, switch the timer from "OFF" mode to "AUTO" or "ON" mode.
- When installing the led lighting system, make sure that all parts / components of the led lighting system work according to the given instructions
- After 15 minutes of operation, disconnect the led lighting system from power supply and check that all parts / components have not accidentally overheated ($> + 70^{\circ} \text{C}$) and that the area around the LED chips has not been physically changed. In case of overheating or malfunction, do not use led lighting system, but contact the dealer or manufacturer as soon as possible!

Warranty card

Lumen led lighting systems has a full warranty of 24 months from the date of purchase. Save your invoice as proof of purchase. Complaints about led lighting systems that do not have an invoice will not be accepted.

No part of this device may be changed or modified. Be sure to follow the safety instructions! Improper use, incorrect installation, mechanical damage due to carelessness, poor maintenance, connection to a faulty power source and similar, void the warranty on the device. Repairs, modifications or any interventions by the customer or unauthorized parties will void the warranty on the device.

Led lighting system repairs may only be carried out by personnel selected by Lumen Aquatech, service centers or direct service from Lumen Aquatech. In case of a complaint about the led lighting systems, the led lighting systems must be delivered to the service in the appropriate packaging (in order to avoid damage during transport). The transport risk is borne exclusively by the sender.

Before sending led lighting system, please contact your dealer or Lumen Aquatech directly.

Led lighting systems that are sent incorrectly packaged will not be accepted for service.

Company name	
Company address	
Product name	
Product type	
Product serial number	
Date of purchase	
Stamp, signature	

IN CASE OF DEVICE REPLACEMENT

The device was replaced with new one on date:.....

IN CASE OF DEVICE REPAIR

Repair request and date of receipt of the device for service:.....

Cause of fault:

Fault and service description:.....

Date of return to the customer:.....



Warranty conditions

The warranty period for Lumen lighting is 24 months from the date of purchase.

The warranty can be verified by the buyer of the product at the dealer or at the manufacturer.

In the case of a transfer of ownership of a product, the warranty passes to the new owner where the warranty period is reduced by the period in which the led lighting system has already been used.

Customer may choose to repair or replace the led lighting system, unless satisfying the customer's choice would not be possible or would involve unreasonably high additional costs.

Lumen Aquatech always strives to repair or replace the device within a maximum of 15 days.

If the manufacturer does not perform the repair or replacement within the period corresponding to his obligation, if he cannot satisfy the interests of the customer or customer's interest in repair or replacement are no longer valid, the customer may (at his request) request payment in proportion to the purchase by the price of the product, it may repair the defect independently or with the help of a third party, or it may withdraw from the contract altogether.

A minor defect in the product cannot be considered as a reason to cancel the purchase.

The warranty period does not include the part of the repair time during which the consumer cannot use the product as planned. In the event of replacement (repair) of the product or any part thereof, the warranty period begins again in relation to the replaced (repaired) product (part of the product) and to the defect that occurs as a result of the repair.

The costs associated with fulfilling the warranty obligation and establishing the contracted condition of the product (including in particular the costs of materials, labor and equipment) are borne by Lumen Aquatech. The warranty does not affect other legal rights. The warranty claim can be confirmed with a warranty card. In case that the customer does not have a warranty card, the conclusion of the customer contract will be considered proven if the customer submit's proof of purchase (invoice).

The customer can change the decision from one choice to another. If he change the choice, he is obliged to pay the incurred costs to the manufacturer only if the manufacturer did not state the reason for the change or the transition to another choice was justified.

If the customer requests the replacement of the led lighting system within 3 working days from the date of purchase due to damage to the device, the manufacturer is obliged to replace the device, provided that the defect occurred exclusively in addition to the proper use of the device.

Contact



www.facebook.com/Lumenlightforaquascaping/



>>> Messages on Facebook



office.lumen-aquatech.com



www.lumen-aquatech.com

Manufacturer: Lumen Aquatech DOO Subotica

Petra Drapšina 11, 24000 Subotica

PIB: 111759430